




# THE ECS FORMULA

## MULTIPLY THE 3 CATEGORIES:

### NEED STUDENTS THE WEIGHTED STUDENT COUNT

**TOTAL STUDENTS** + **30% \* LOW-INCOME STUDENTS** + **15% \* ENGLISH LANGUAGE LEARNERS**

For whom the town is financially responsible

Students who receive free and reduced price lunch (FRPL)

**LOW-INCOME CONCENTRATION**

5% \* The number of FRPL students who put a town above 75% FRPL

X





**FOUNDATION AMOUNT**  
**\$11,525**

Estimated Cost of Educating a Student

X

### STATE AID PERCENTAGE THE STATE'S SHARE OF EDUCATION COSTS

**70% \* PROPERTY COMPONENT** + **30% \* INCOME COMPONENT**





$1 - \frac{\text{Town Net Grand List Per Capita}}{1.35 * \text{Median Town Net Grand List Per Capita}}$

$1 - \frac{\text{Town Median Household Income}}{1.35 * \text{Median Town Household Income}}$

- EXCEPT THE AID PERCENTAGE IS NO LESS THAN 10% FOR ALLIANCE DISTRICTS AND NO LESS THAN 1% FOR ANY OTHER TOWN
- AND THE 19 LEAST-WEALTHY TOWNS RECEIVE AN ADDITIONAL 3 TO 6 PERCENTAGE POINTS (towns with a Public Investment Community Index over 300)

### AND THEN ADD:


**REGIONAL DISTRICT BONUS**

Town's Number of Students in Regional District

If the Town Belongs to a Regional District

X

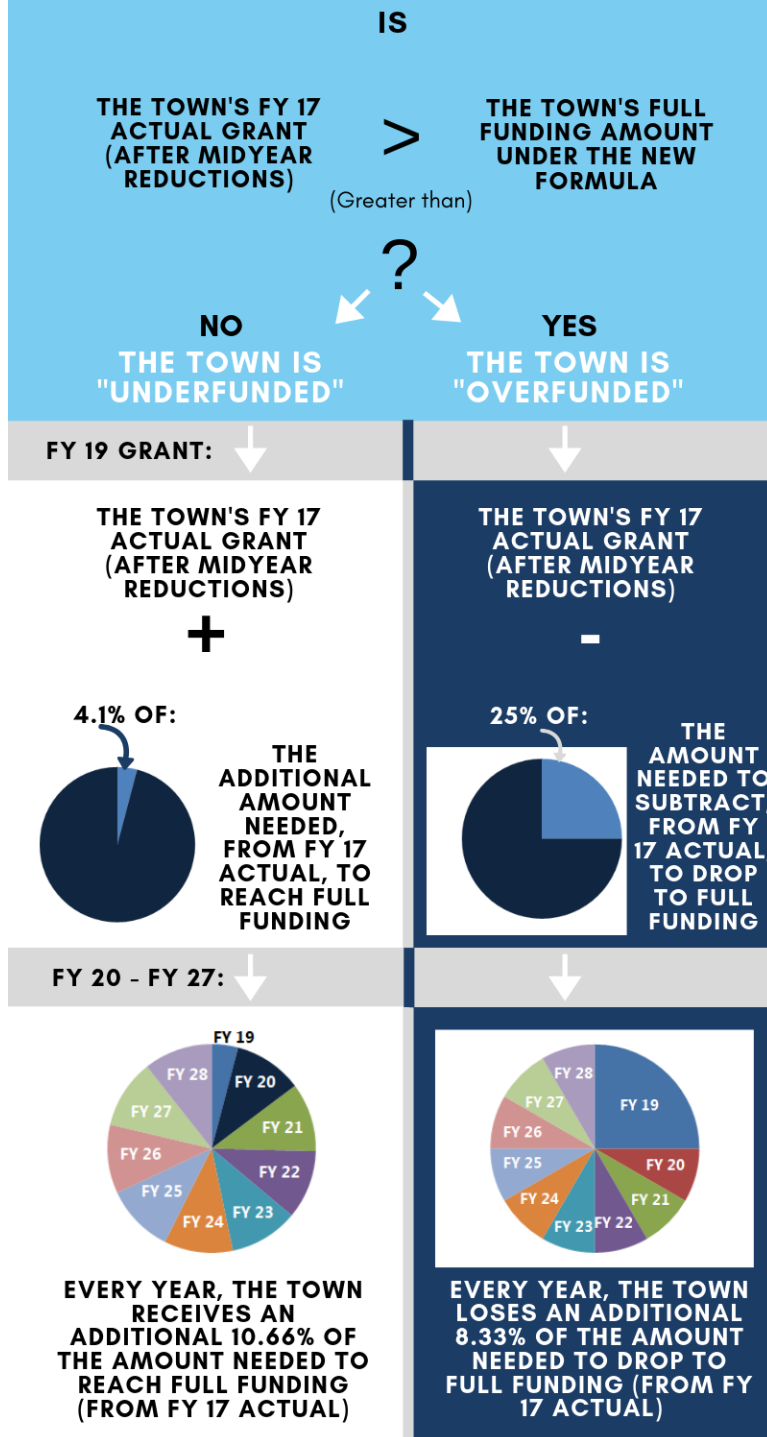
$[(\text{Number of Grades in Regional District}) / 13] * 100$

### THE FORMULA PHASE-IN BEGAN IN FY 19.

It continues in FY 20 and FY 21.  
See the next page.

Office of Fiscal Analysis  
Icons: Flaticon.com

# THE ECS FORMULA PHASE-IN



THE FULL FUNDING AMOUNT CHANGES ANNUALLY TO REFLECT UPDATED STUDENT AND TOWN DATA.

**IN FY 28, THE FORMULA IS FULLY PHASED-IN. NO TOWN IS OVER- OR UNDER-FUNDED.**