

2010 Program Report Card Update: Resident Trooper Program (Connecticut State Police)

Quality of Life Result: *The Resident Trooper Program protects, maintains and enhances the quality of life for all in contracted communities by providing emergency response, policing services and proactive efforts in communities that do not employ full time police departments.*

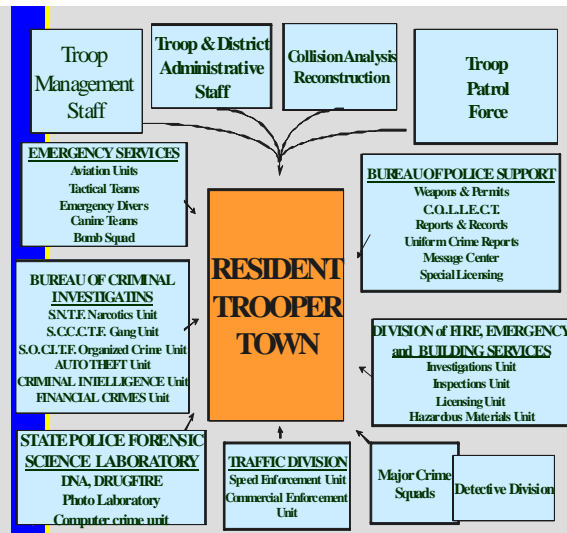
The Resident Trooper Program allows for individualized community approaches by designing and employing proactive preventative strategies and responses to criminal activities and quality of life threats and issues: *Resident Trooper towns have effective police response units at a reduced cost, that respond and addresses criminal conduct, identifies community hazards, provides public safety education and crafts strategies to address illegal activities and hazards.*

Contribution to Result: *When a Resident Trooper is assigned, they assume public safety responsibility for the contracting community by responding to emergencies, identifying and addressing public safety risks within the community by; efficient response, crafting proactive preventative strategies and programs to address roadway/highway safety, criminal conduct and threats to the community.*

Total Program Funding: \$16,753,953 State Funding: \$4,862,184.55 Federal Funding: \$275,363.00 Town Reimbursement: \$11,616,405.00

Partners:

Internal State Police



Partners:

External

Federal Agencies:
 FBI, IRS, US Attorney, DEA, ATF,
State Agencies:
 DCF, Courts, Probation-Parole, Liquor Control,
 Public Health, Homeland Security
Local Policing Agencies
 Local EMS/Fire Departments

Partners:

Community ***

Acceptable and preferred modern methods of policing require the community to become actively involved in a cooperative measure with the police to effectively solve and address crimes and public safety issues in the community.

Neighborhoods and Community Groups
 Schools and Educational Systems
 Business Community
 Faith based/Clergy
 Community/Political
 Non Governmental Agencies
 Community Activists
 Volunteer Groups

Performance Measure 1:

Training and additional oversight for the State Police Command Staff, Resident Trooper Supervisors and the Resident Troopers on recent fiscal changes to the program. This training shall also incorporate training that would increase and enhance communications between the Town's Chief Executive Officers, Resident Troopers and the Troop Commanders responsible for the effectiveness of the program.

Story behind the baseline: A recent change and subsequent Attorney General's opinion which altered the way the Resident Trooper Program is billed to the Towns has created significant frustration within the towns. The issue has had unintended consequences, such as limiting the towns CEOs' control of Resident Trooper overtime expenditures. This has become a serious area of frustration as the towns use to be able to control extra duty assignments of the RTs as the towns were being billed for 100% of the overtime until recently. With the recent AG's opinion the State is now responsible for 30% of all Resident Trooper overtime, which is an unfunded issue, which is now closely considered and monitored.

Proposed actions to turn the curve:

Increase the knowledge of the optional and adaptable aspects of the Resident Trooper Program with the Town CEOs and the Troop Commanders. This will make available and recognize the full resources of the State Police and ensure they are considered and utilized when additional policing activities are required in the Resident Trooper Towns.

Performance Measure 2:

Establish goals and objectives with the CEOs of the Resident Trooper Towns which include efficiency of the program and effectiveness of personnel assigned to the program. This should be done yearly and monitored quarterly by the Troop Commanders.

Story behind the baseline: The Resident Trooper Program is a fascinating and progressive program that provides a great deal of opportunity within each town. In a recent review of the program it is apparent that the CEOs and Troop Commanders are not communicating effectively to explore some, or many, of the flexible options associated with the program. This can be seen as a great deal of additional policing activities has been addressed by simply paying the Resident Troopers overtime to accomplish. This may be correct in some instances; however, it does not seem that an effective job of exploring flex scheduling, shift changes and utilizing Troop patrol personnel are being consistently considered.

Proposed actions to turn the curve:

Resident Trooper Workshops with the Towns Chief Executive Officers (CEOs) the Troop Commanders, District Commanders and the Commanding Officer of the State Police Field Operations (Lieutenant Colonel). The workshops would explore what resources are currently contracted and what current duties are being performed. It would also explore what additional duties may, or at times, are necessary and explore options that may include overtime, or other adjustments to accomplish. This would also allow for the agency to clearly establish better lines of communications for Town CEO's to communicate when there are issues.

Performance Measure 3:

A review of the above Graphs and Charts for Town Comparisons of Police Services for the years 2007-2008 and 2008-2009 indicates the following: Towns without Resident Troopers that employ full time police departments pay a significantly higher rate for police services and employ significantly more personnel at a much higher cost.

Story behind the baseline: Story behind the

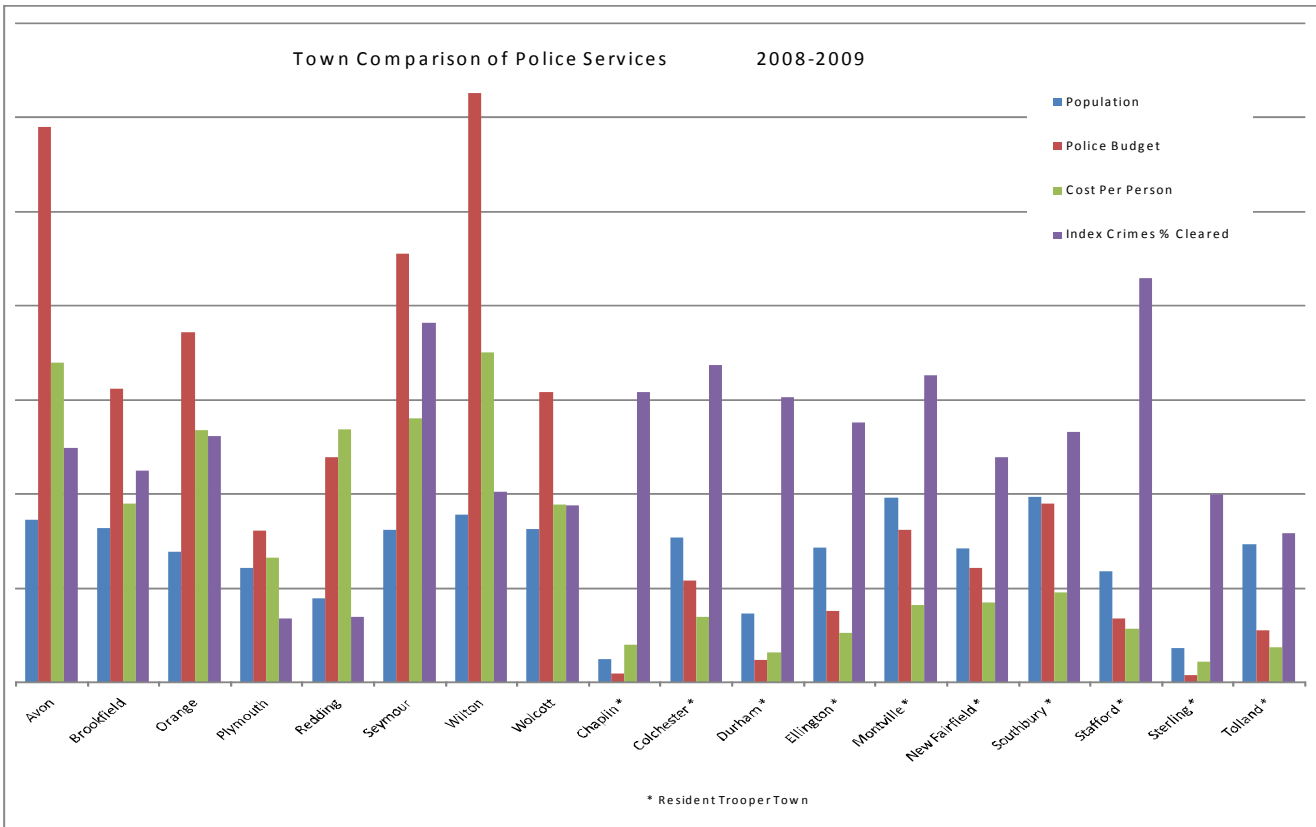
baseline: With the significant additional cost associated with independent police departments (red lines in graphs), the numbers of part 1 index crimes reported to the FBI do not reflect a positive correlation, or influence, on the cases solved (purple lines in graphs), or resolved in the State. Towns with Resident Troopers have a much lower cost and a more efficient solve or resolve rate of the part 1 index crimes reported to the FBI.

Proposed actions to turn the curve:

The amount of solved or resolved rate with independent police departments can have a correlation with the various priorities of each individual community. Some communities put more of an emphasis on patrol visibility, police response, community policing and others on the solving of criminal conduct.

The Resident Trooper Program conforms to an agency expectation of solving part 1 FBI reportable crimes. This is an agency priority and is best accomplished when the Resident Trooper commit to and effectively work with the community, Patrol Troopers and the Detectives from the Major Crime Squad to provide additional resources and effort on each of these crimes.

Town Comparison of Police Services 2008-2009



COMPARISON OF POLICE BUDGETS, TOWNS AND STAFF

Town	Population	Police Budget	Cost / Person	Index Crimes			Square Miles	Road Miles	Full-Time Sworn -State	Full-Time Sworn-Town
				Offences	Clearances	% cleared				
Avon	17,342	\$5,898,442.00	\$340.12	189	47	24.90%	23.5	100.88	0	35
Brookfield	16,429	\$3,119,695.00	\$189.88	138	31	23%	20.4	98.88	0	33
Chaplin *	02,512	\$101,000.00	\$40.20	26	8	31%	19.6	37.57	1	0
Colchester *	15,421	\$1,080,691.00	\$70.07	169	57	33.70%	49.9	113.62	2	10
Durham *	07,358	\$239,277.00	\$32.51	66	20	30.30%	23.8	59.65	1	0
Ellington *	14,370	\$759,495.00	\$52.85	87	24	27.60%	34.6	90.36	5	0
Montville *	19,660	\$1,618,659.65	\$82.33	129	42	32.60%	44.1	119.12	1	23
New Fairfield *	14,248	\$1,218,129.00	\$85.49	67	16	23.90%	25.1	66.16	7	4
Orange	13,878	\$3,717,922.00	\$267.90	454	119	26.20%	17.4	108.03	0	43
Plymouth	12,164	\$1,612,128.00	\$132.53	237	16	6.80%	22.3	82.38	0	27
Redding	08,919	\$2,397,305.00	\$268.78	86	6	7.00%	32.1	92.79	0	15
Seymour	16,249	\$4,551,350.00	\$280.10	249	95	38.20%	15	79.9	0	45
Southbury *	19,722	\$1,896,269.00	\$96.14	169	45	26.60%	40	131.84	1	23
Stafford *	11,826	\$678,745.00	\$57.39	56	24	42.90%	58.8	115.78	5	2
Sterling *	03,657	\$82,339.00	\$22.51	30	6	20.00%	27.3	47.1	1	0
Tolland *	14,699	\$555,543.00	\$37.79	63	10	15.90%	40.3	129.06	6	0
Wilton	17,877	\$6,258,844.00	\$350.10	128	26	20.30%	27.4	127.18	0	44
Wolcott	16,300	\$3,081,263.00	\$189.03	250	47	18.80%	21.1	90.03	0	24

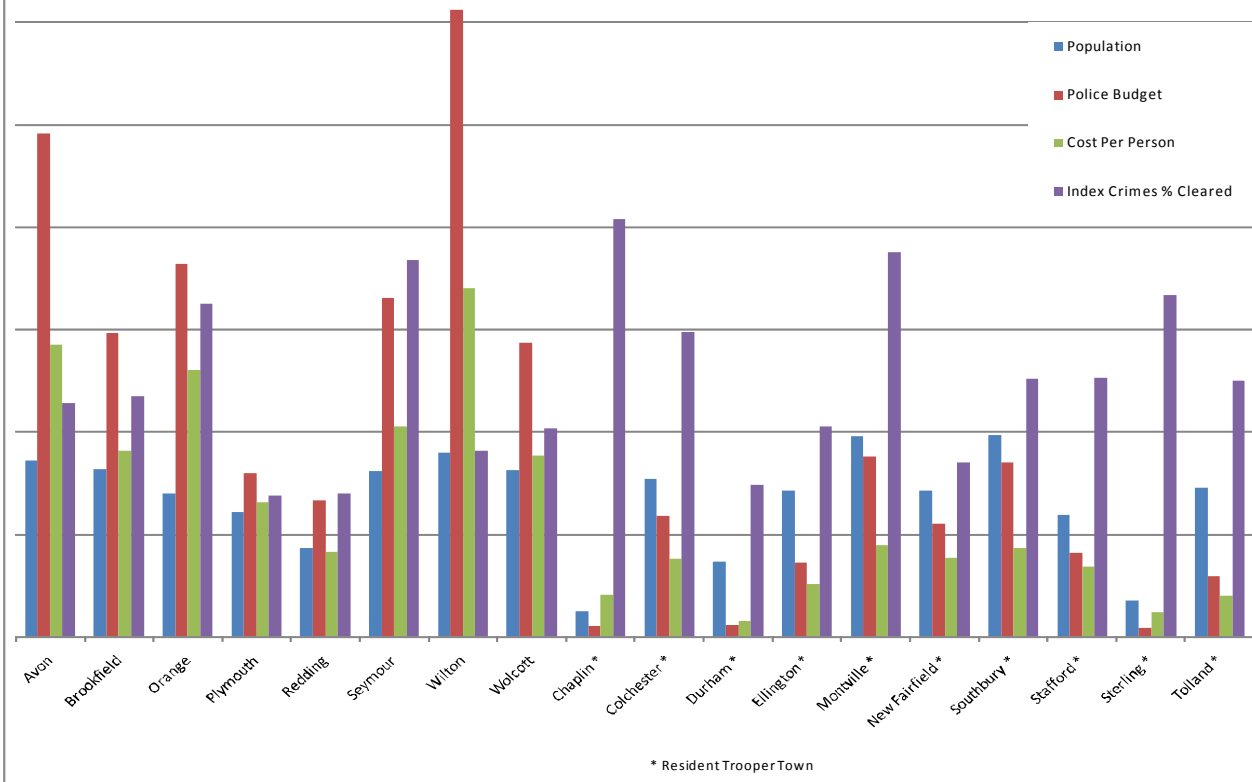
* = Town with the Resident State Trooper Program

Source documents: State Police and CT Office of Policy Management, Intergovernmental Policy Division (2008/2009 Budgets) Dept. Of Public Safety Uniform Crime Reports.

Index Crimes include murder, rape, robbery, aggravated assault, burglary, larceny and motor vehicle theft.

2008-09 Population Estimates from the Connecticut State Register and Manual.

Town Comparison of Police Services 2007-2008



COMPARISON OF POLICE BUDGETS, TOWNS AND STAFF

Town	Population	Police Budget	Cost / Person	Index Crimes			Square Miles	Road Miles	Full-Time Sworn -State	Full-Time Sworn-Town
				Offenses	Clearances	% cleared				
Avon	17,209	\$4,909,477.00	\$285.29	193	44	22.80%	23.5	100.88	0	35
Brookfield	16,354	\$2,964,038.00	\$181.24	175	41	23%	20.4	98.88	0	33
Chaplin *	02,472	\$101,000.00	\$40.86	27	11	41%	19.6	37.57	1	0
Colchester *	15,389	\$1,174,367.00	\$76.31	95	28	29.74%	49.9	113.62	2	9
Durham *	07,266	\$111,500.00	\$15.35	54	8	14.81%	23.8	59.65	1	0
Ellington *	14,217	\$726,307.00	\$51.09	107	22	20.56%	34.6	90.36	5	0
Montville *	19,612	\$1,753,000.00	\$89.38	176	66	37.50%	44.1	119.12	1	20
New Fairfield *	14,261	\$1,103,764.00	\$77.40	47	8	17.02%	25.1	66.16	7	5
Orange	13,970	\$3,638,246.00	\$260.43	489	159	32.52%	17.4	108.03	0	44
Plymouth	12,183	\$1,596,024.00	\$131.00	320	44	13.75%	22.3	82.38	0	25
Redding	08,646	\$1,332,234.00	\$82.52	50	7	14.00%	32.1	92.79	0	15
Seymour	16,144	\$3,309,493.00	\$205.00	269	99	36.80%	15	79.9	0	43
Southbury *	19,677	\$1,697,570.00	\$86.27	199	50	25.13%	40	131.84	1	22
Stafford *	11,857	\$815,755.00	\$68.80	87	22	25.29%	58.8	115.78	5	2
Sterling *	03,519	\$82,339.00	\$23.40	39	13	33.33%	27.3	47.1	1	0
Tolland *	14,571	\$586,043.00	\$40.22	96	24	25.00%	40.3	129.06	5	0
Wilton	17,960	\$6,113,942.00	\$340.42	132	24	18.18%	27.4	127.18	0	42
Wolcott	16,228	\$2,873,064.00	\$177.04	320	65	20.31%	21.1	90.03	0	23

* = Town with the Resident State Trooper Program

Source documents: State Police and CT Office of Policy Management, Intergovernmental Policy Division (2007/2008 Budgets) Dept. Of Public Safety Uniform Crime Reports.

Index Crimes include murder, rape, robbery, aggravated assault, burglary, larceny and motor vehicle theft.

:007-08 Population Estimates from the Connecticut State Register and Manual.

