

Program Name: Judicial Branch – CSSD Contracted Services (Alternative Incarceration Center)

Quality of Life Result to Which Program Contributes

Connecticut families will live in safe communities.

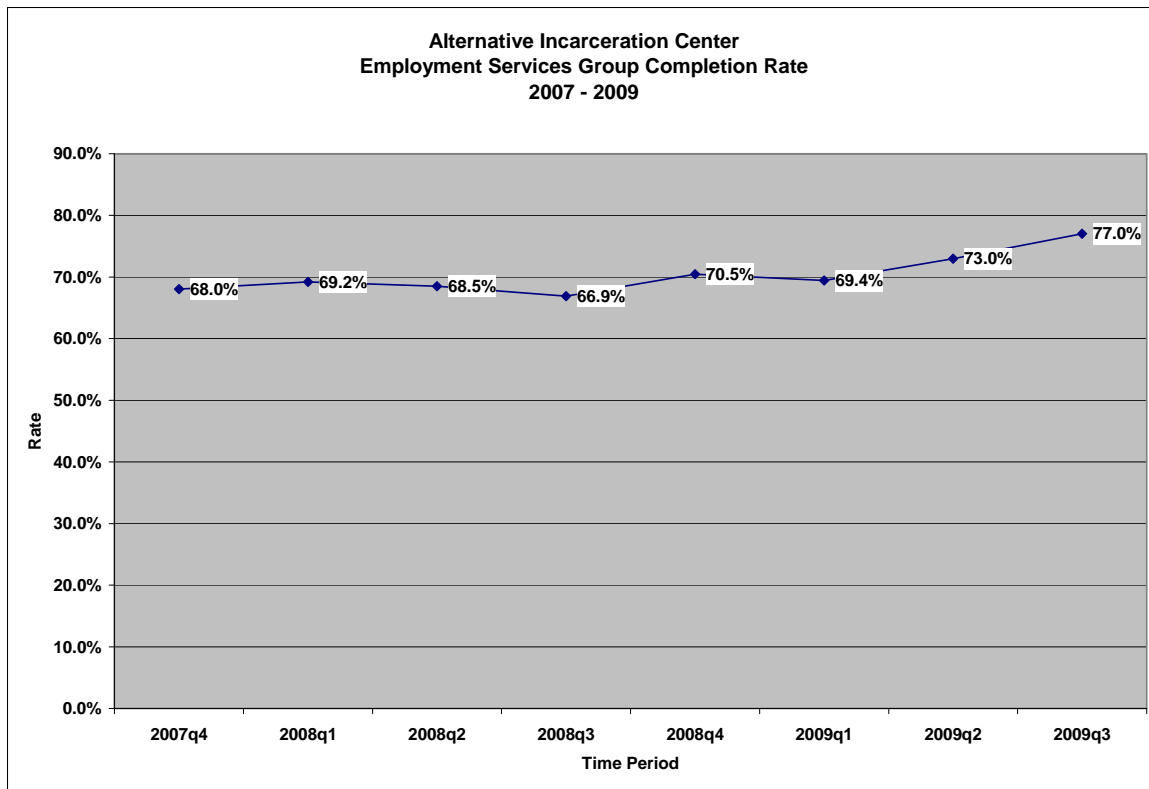
Program’s Contribution to Result

- The Alternative Incarceration Center (AIC) has a goal to reduce offender long-term recidivism, change offender behavior resulting in more successful discharges, provide a cost effective criminal justice response to criminal activity, and increased offender accountability. All of these goals contribute to safer communities for Connecticut families.

Partners

- Criminal/Juvenile Justice System (Judges, prosecutors, Victim Advocates, public defenders / private attorneys)
- Contracted, non-profit and for-profit treatment providers
- Other state agencies (DMHAS, DOC, DCF, DSS)
- Family members
- Juvenile/Criminal Justice Advocacy agencies

Performance Measure #1



*Data points represent clients who participated by calendar quarter.

2009-2011 Goals

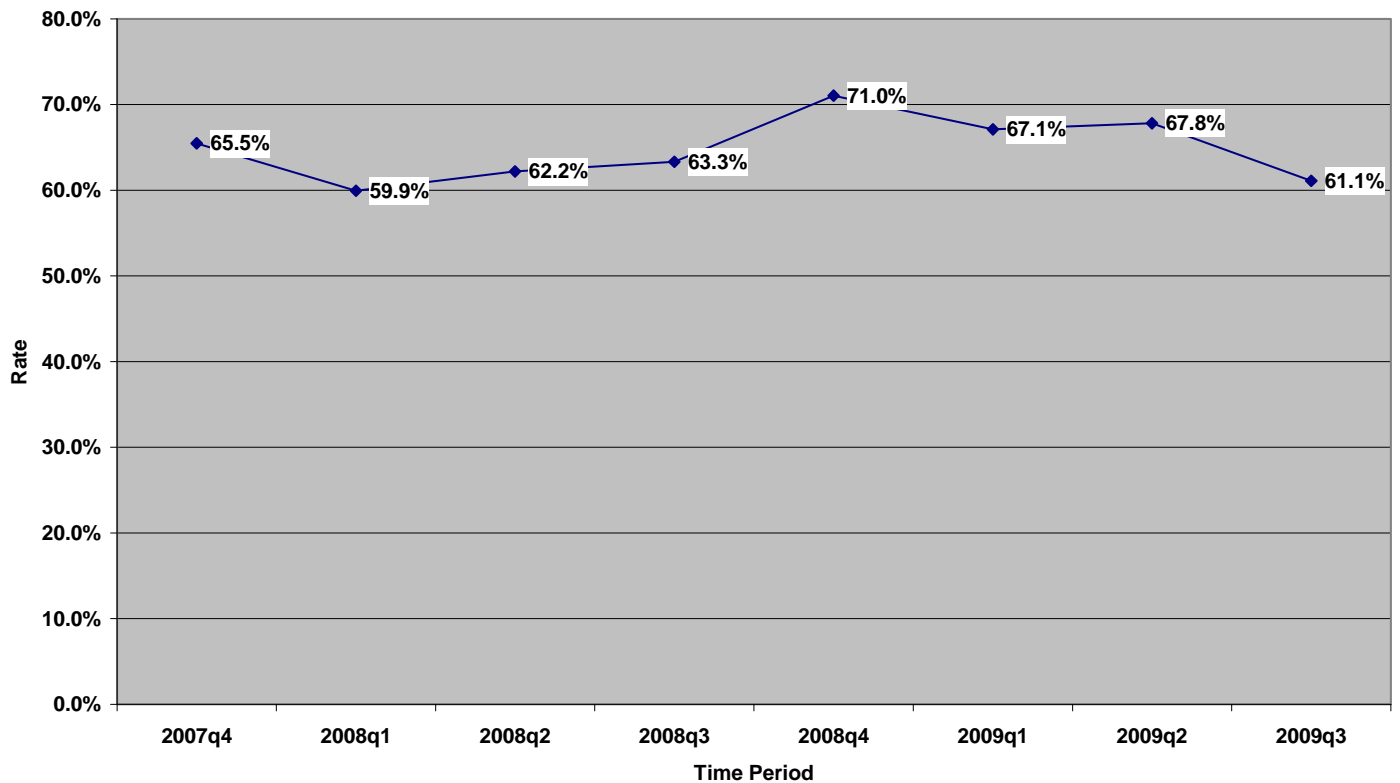
<u>Performance Measure</u>	<u>Baseline</u>	<u>2009 Goal</u>	<u>2010 Goal</u>	<u>2011 Goal</u>
Employment Services Group Completion Rate	71%	90%	90%	90%

Story Behind the Baseline

Employment Services Group at the AIC is a four session curriculum followed by a period of active job search support. Factors impacting this performance measure include the availability of jobs, the private sector's willingness to employ offenders, and retention of offenders in these groups held at the AICs. While CSSD's goal is for a 90 percent completion rate, the positive trend over the past several quarters reflects increased attention to this measure as a result of the economic downturn.

Performance Measure #2

**Alternative Incarceration Center
Reasoning and Rehabilitation II Group Completion Rate
2007 - 2009**



*Data points represent clients who participated by calendar quarter.

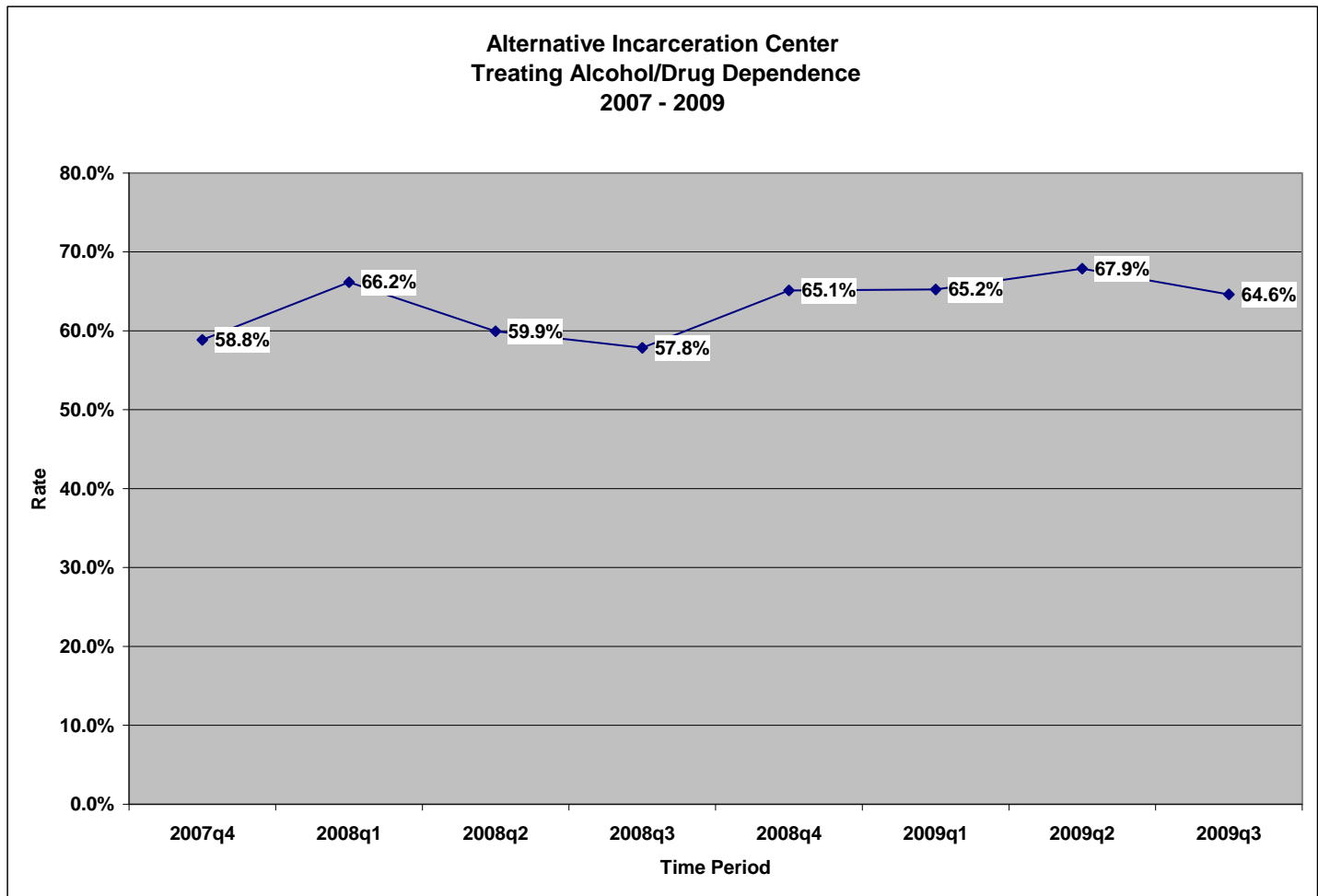
2009-2011 Goals

<u>Performance Measure</u>	<u>Baseline</u>	<u>2009 Goal</u>	<u>2010 Goal</u>	<u>2011 Goal</u>
Reasoning and Rehabilitation II Group Completion Rate	66%	70%	70%	72%

Story Behind the Baseline

Reasoning and Rehabilitation II (R&R II) is a 14-session group offered at the AIC that utilizes a cognitive-behavioral approach to behavior change. The trend over the past several quarters is variable and lacks consistent direction; this trend is the result of many factors, including group retention rates and quality of service delivery. CSSD has a goal to reach a minimum of a 70 percent completion rate. Recent efforts toward improvement have focused on an in-depth analysis of completion rates by age, as well as court status, with a goal of improving completion rates for persons 16-24 and pre-trial defendants. CSSD will continue to work with its Quality Assurance vendor to ensure that R&R II is delivered with fidelity to the model and that there is minimal wait for services.

Performance Measure #3



*Data points represent clients who participated by calendar quarter.

2009-2011 Goals

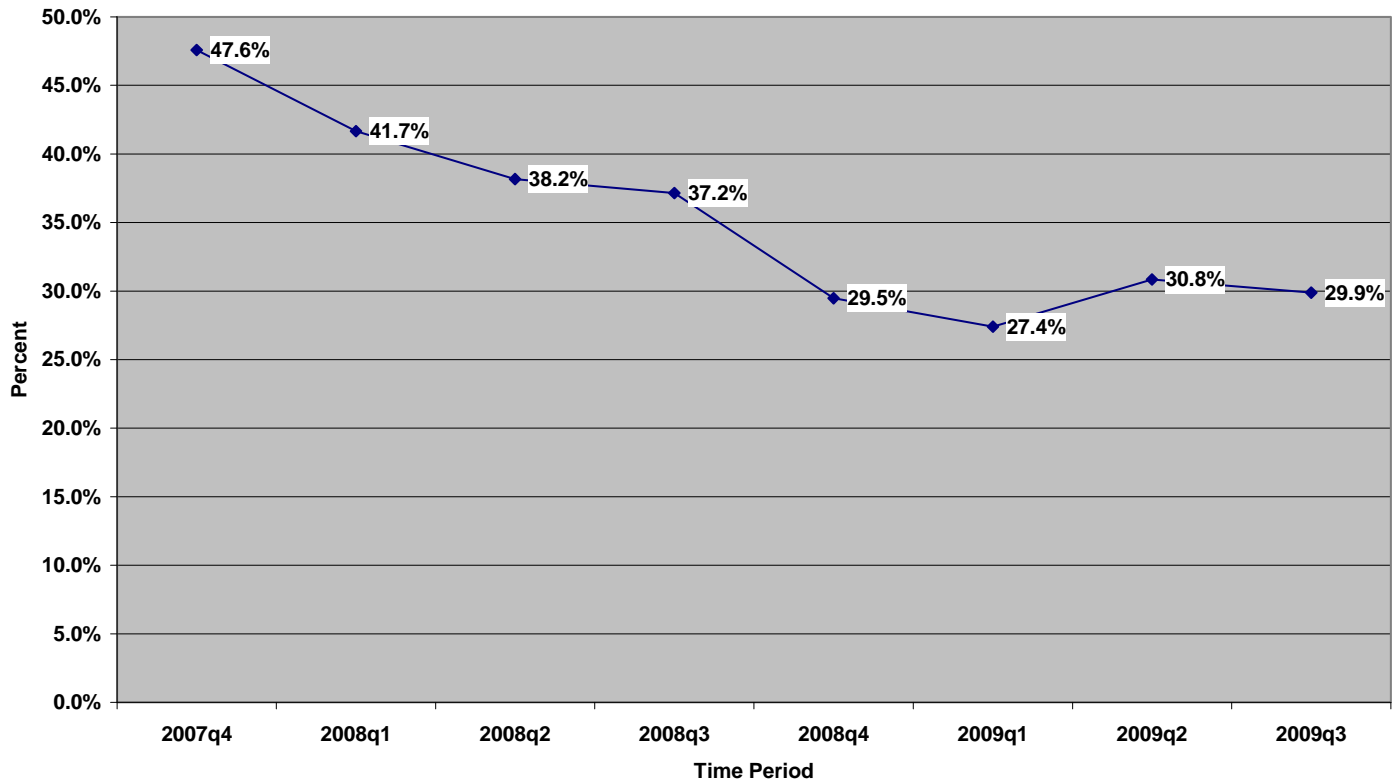
<u>Performance Measure</u>	<u>Baseline</u>	<u>2009 Goal</u>	<u>2010 Goal</u>	<u>2011 Goal</u>
Treating Alcohol/Drug Dependence Group Completion Rate	62%	70%	70%	70%

Story Behind the Baseline

Treating Alcohol/Drug Dependence is a 12-session curricula aimed at reducing the use and abuse of alcohol and illegal substances that have contributed to criminal behavior. The trend in completion rates over the past several quarters has been generally positive, but short of CSSD's goal of 70 percent. Performance on this measure is influenced by group retention rates and fidelity of service delivery, among other factors. CSSD continues to explore with its non-profit contractors strategies to improve completion rates for clients age 16-24 that focus on improvements in the delivery of the curriculum and increased collaboration with probation officers and bail commissioners.

Performance Measure #4

**Alternative Incarceration Center
Employment Services Group Clients Gaining Employment
2007 - 2009**



*Data points represent clients who participated by calendar quarter.

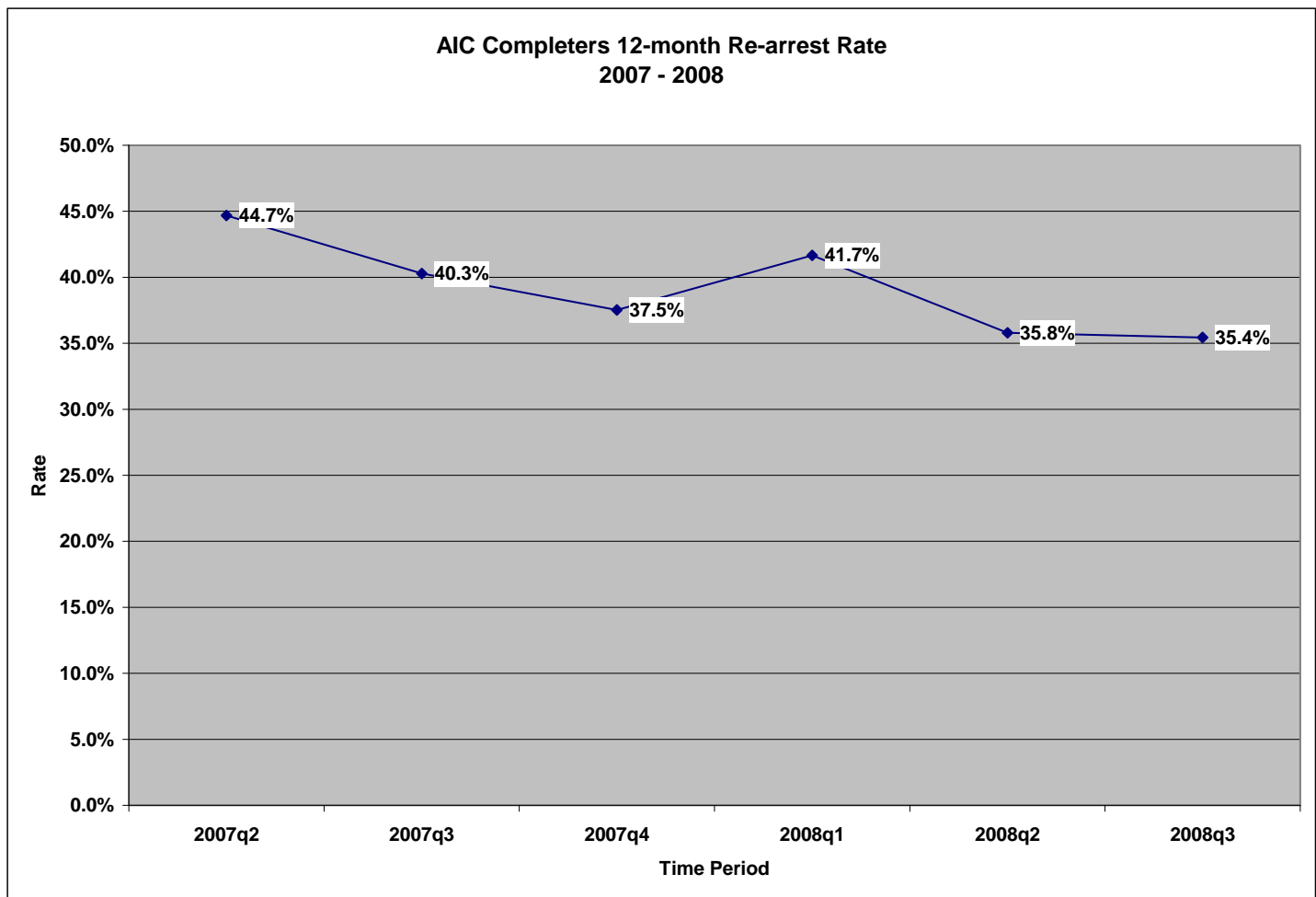
2009-2011 Goals

<u>Performance Measure</u>	<u>Baseline</u>	<u>2009 Goal</u>	<u>2010 Goal</u>	<u>2011 Goal</u>
Employment Services Group – Clients Gaining Employment	27%	50%	50%	50%

Story Behind the Baseline

This performance measure examines the rate at which clients who complete the Employment Services Group (performance measure #1) obtain employment prior to discharge from the AIC. While this trend has been negative over the past several periods, this is certainly due in part to a deteriorating job market resulting from the economic downturn. CSSD is working with its non-profit providers to increase collaboration with local businesses willing to employ persons with criminal backgrounds. A recent federally-funded initiative in Hartford with Community Partners in Action, as well as similar projects in New Haven and Bridgeport, should yield increased employment gains for AIC clients in our most populated cities.

Performance Measure #5



*Data points represent clients who discharged by calendar quarter.

2009-2011 Goals

<u>Performance Measure</u>	<u>Baseline</u>	<u>2009 Goal</u>	<u>2010 Goal</u>	<u>2011 Goal</u>
AIC Completers 12-month Re-arrest Rate	40%	39%	38%	37%

Story Behind the Baseline

This performance measure examines the rate at which clients who complete AIC services are re-arrested within 12 months of discharge. A 2004 study of AIC's by the CT Legislative Program Review and Investigations Committee (LPRIC) showed a recidivism rate of 44 percent for AIC participants. The trend over the past several quarters is positive and reflects a re-arrest rate lower than that reported by LPRIC. CSSD is hopeful that continued emphasis on quality assurance, increases in service completion, and employment gains will continue to lower post-discharge re-arrests.

Proposed Actions to Turn the Curve

No- and Low-cost Actions designed to impact all performance measures:

- Fully operationalize evidence-based, risk reduction services thru increased quality assurance, contract monitoring and research/evaluation
- Reduce the capacity of underutilized contracted community-based treatment programs and consolidate programs where appropriate
- Utilize federal funds for program creation or expansion if available