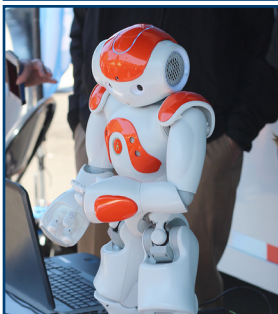


Advanced Manufacturing Mobile Training Lab



Taking Advanced Manufacturing Education on the Road

Goodwin College's Department of Business, Management, and Advanced Manufacturing prepares career-focused learners with the technical, professional, and interpersonal competencies to meet the needs of today's employers. With this knowledge and ethical mindset, individuals can contribute to the social responsibility and sustainability of organizations within the community.

The **Goodwin Advanced Manufacturing Mobile Training Lab** brings necessary training for skills to:

- *employers* for workforce development
- *high school students*, who can earn college credit in manufacturing
- *middle school students*, inspiring young "makers" to become part of the next generation's workforce
- *the community*, to share information on the awesome opportunities for great careers in manufacturing

Bringing the mobile lab to schools and manufacturing facilities reaches audiences who may not otherwise have access to training and introduces them to a world of career possibilities.

Our Manufacturing in Motion session is 45 to 90 minutes. If you have creative students who like to make things, the MIM program is a great enhancement to your class.

- State-of-the-art mobile classroom
- Accommodates 12-15 students for classes
- Equipped to present any Goodwin College manufacturing course
- Self-powered and climate controlled
- Wi-Fi hotspot
- Easy entrance and accessibility
- Perfect for incumbent worker training; fairs and expos; career exploration events; public relations opportunities

The Advanced Manufacturing Mobile Training Lab brings the college experience to you! For information on booking the lab for your school or facility, please contact:

Guy LaBella
Director of College Relations
glabella@goodwin.edu
860-727-6948

Goodwin College Department of Business, Management, and Advanced Manufacturing
 One Pent Road
 East Hartford, Connecticut 06118