



OLR BACKGROUNDER: CONNECTICUT PRISON POPULATION OVER THE LAST FIVE YEARS OLR BACKGROUNDER: CONNECTICUT PRISON POPULATION OVER THE LAST FIVE YEARS

By: Katherine Dwyer, Associate Legislative Attorney

ISSUE

This Backgrounder provides statistics on how the Connecticut prison population has changed over the last five years. It updates OLR report [2012-R-0080](#). **This report has been updated by OLR Report [2022-R-0200](#).**

SUMMARY

On September 6, 2016, Connecticut's prison population reached its lowest total at any time during the five-year period from October 1, 2011 through October 1, 2016: 14,984 (unsentenced: 3,839; sentenced: 11,184). The sentenced population reached its lowest point about three weeks later, on October 1, 2016: 11,103.

Over that five year period, the Department of Correction's daily incarcerated population report showed that the:

1. total incarcerated population fluctuated from a high of 17,888 inmates on October 18, 2011 to a low of 14,984 inmates on September 6, 2016;
2. sentenced inmate population fluctuated from a high of 13,690 on October 21, 2011 to a low of 11,103 on October 1, 2016; and
3. unsentenced inmate population fluctuated from a high of 4,657 on October 1, 2013 to a low of 3,696 on June 11, 2016.

TABLE

Table 1 displays the incarcerated population (sentenced, unsentenced, and total) on the first of each month from January 1, 2012 through October 1, 2016.



Table 1: Total Incarcerated, Sentenced, and Unsentenced Population Since 2012, by Month

<i>Date</i>	<i>Total Incarcerated Population</i>	<i>Sentenced Population</i>	<i>Unsentenced Population</i>
2011			
October 1	17,762	13,602	4,160
November 1	17,774	13,602	4,172
December 1	17,459	13,310	4,149
2012			
January 1	17,022	12,955	4,067
February 1	17,262	13,134	4,128
March 1	17,169	13,051	4,118
April 1	16,986	12,837	4,149
May 1	16,858	12,751	4,107
June 1	16,718	12,670	4,048
July 1	16,591	12,484	4,107
August 1	16,660	12,351	4,309
September 1	16,646	12,318	4,328
October 1	16,741	12,323	4,418
November 1	16,826	12,401	4,425
December 1	16,563	12,315	4,248
2013			
January 1	16,347	12,110	4,237
February 1	16,757	12,450	4,307
March 1	16,641	12,450	4,183
April 1	16,580	12,376	4,204
May 1	16,728	12,490	4,238
June 1	16,869	12,594	4,275
July 1	16,988	12,564	4,424
August 1	17,142	12,650	4,492
September 1	17,065	12,514	4,551
October 1	17,204	12,547	4,657
November 1	17,103	12,701	4,402
December 1	16,786	12,560	4,226
2014			
January 1	16,594	12,420	4,174
February 1	16,839	12,647	4,192
March 1	16,626	12,558	4,068
April 1	16,568	12,645	3,923
May 1	16,541	12,633	3,908
June 1	16,528	12,540	3,988
July 1	16,551	12,490	4,061
August 1	16,569	12,453	4,116
September 1	16,577	12,365	4,212
October 1	16,608	12,469	4,139
November 1	16,605	12,376	4,229
December 1	16,436	12,303	4,133

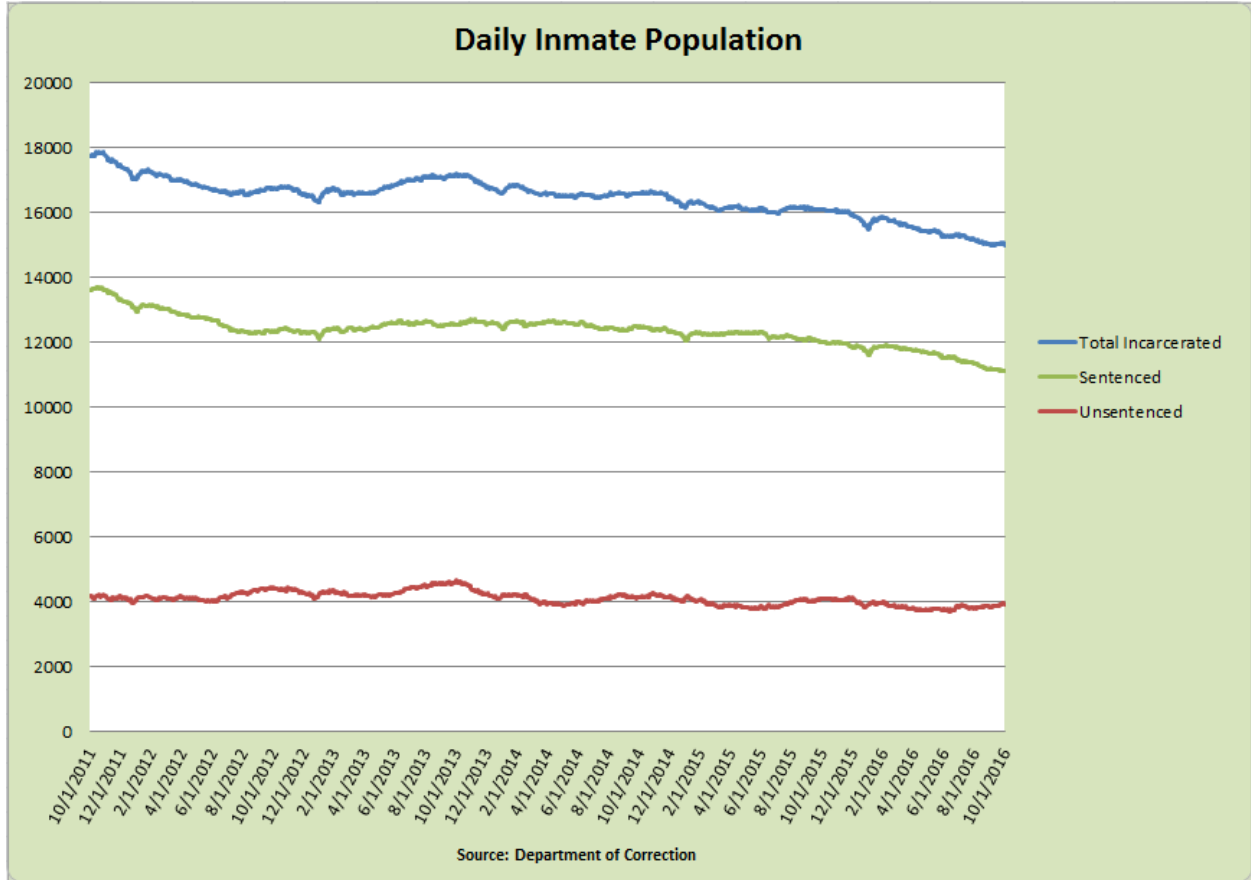
Table 1 (continued)

<i>Date</i>	<i>Total Incarcerated Population</i>	<i>Sentenced Population</i>	<i>Unsentenced Population</i>
2015			
January 1	16,167	12,068	4,099
February 1	16,302	12,277	4,025
March 1	16,158	12,269	3,889
April 1	16,198	12,296	3,902
May 1	16,122	12,306	3,816
June 1	16,165	12,301	3,864
July 1	16,025	12,170	3,855
August 1	16,156	12,178	3,978
September 1	16,168	12,074	4,094
October 1	16,099	12,000	4,099
November 1	16,028	12,000	4,028
December 1	15,982	11,856	4,126
2016			
January 1	15,500	11,603	3,897
February 1	15,860	11,886	3,974
March 1	15,691	11,850	3,841
April 1	15,527	11,759	3,768
May 1	15,411	11,675	3,736
June 1	15,322	11,538	3,784
July 1	15,342	11,468	3,874
August 1	15,161	11,358	3,803
September 1	15,023	11,184	3,839
October 1	15,010	11,103	3,907

CHART

The chart below shows the daily incarcerated population from October 1, 2011 through October 1, 2016.

Chart 1: Daily Incarcerated Population, October 1, 2011 to October 1, 2016



KD:bs