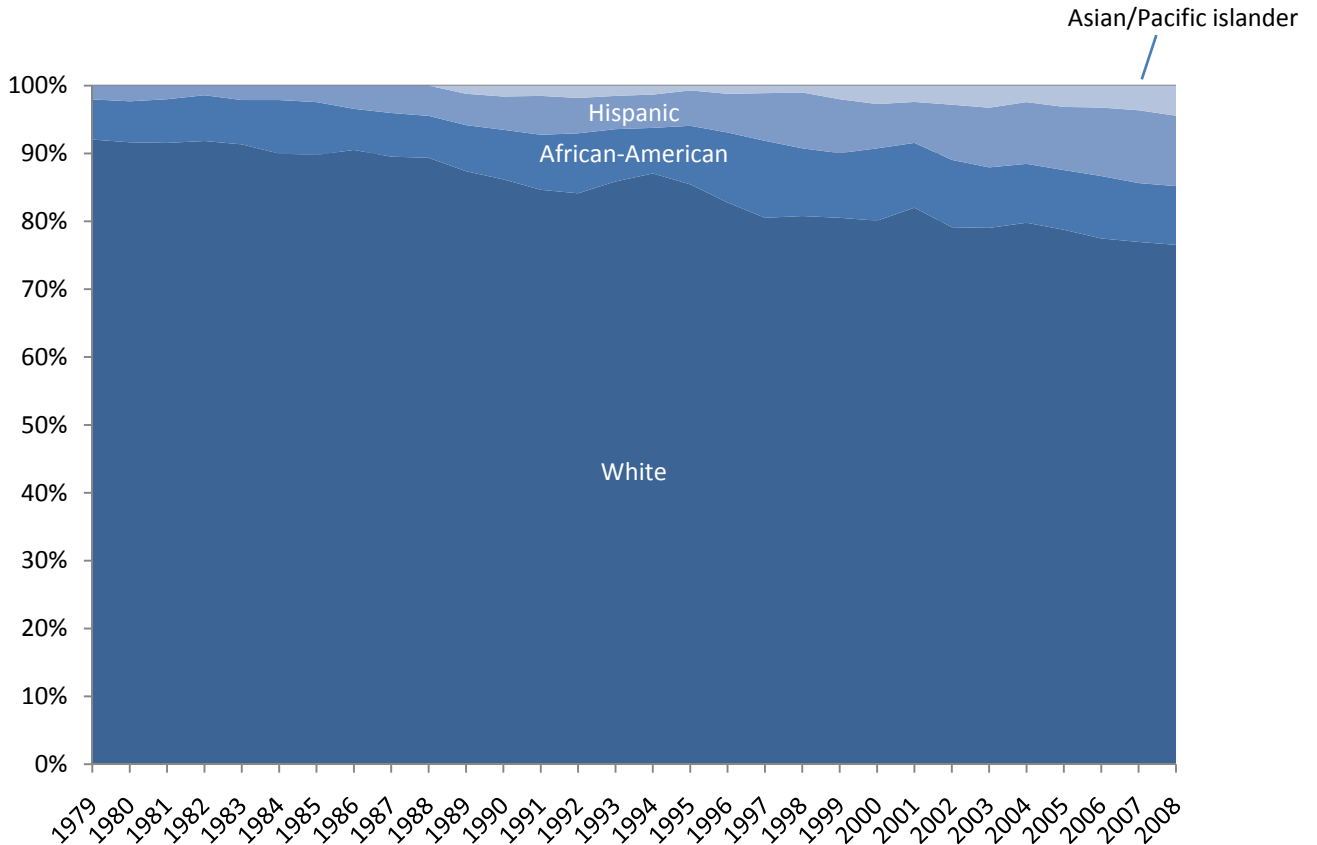




## The State of Working Connecticut

### Minorities are an increasing portion of Connecticut's labor force

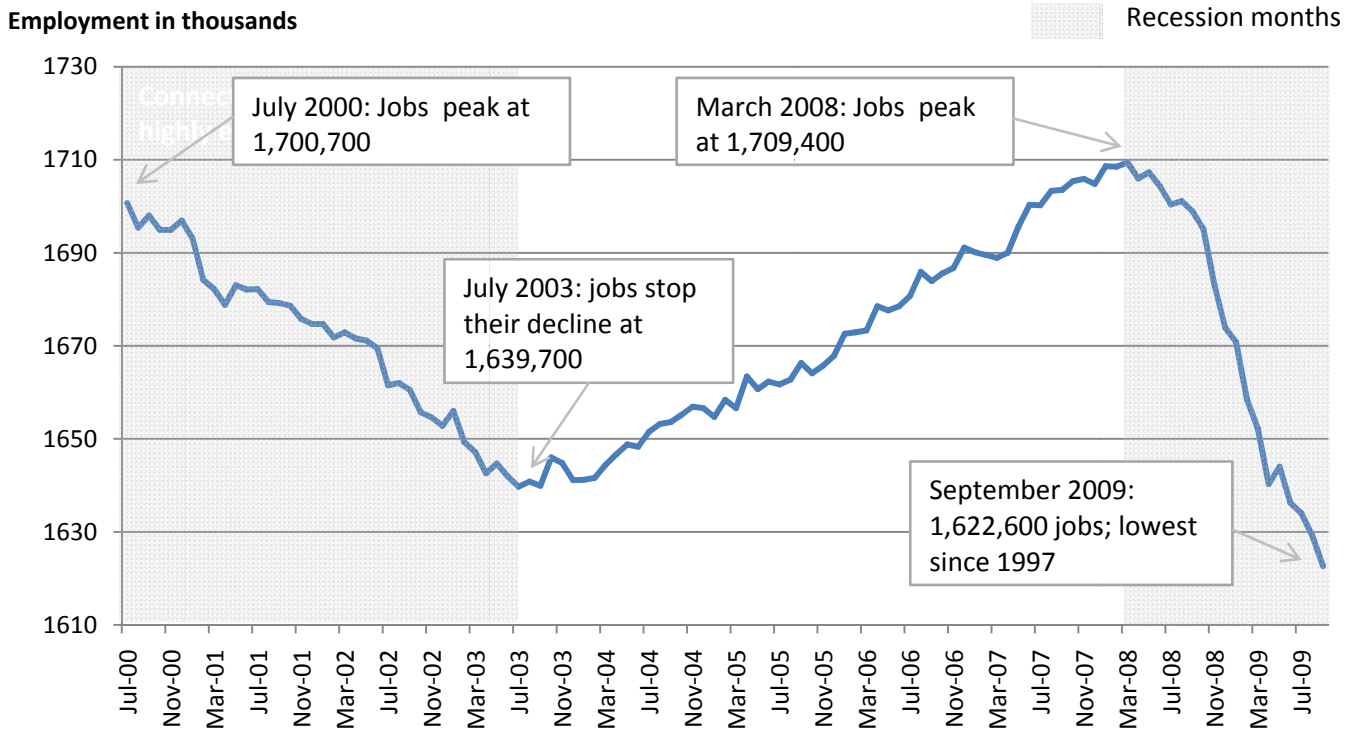


### Connecticut's labor force is highly educated

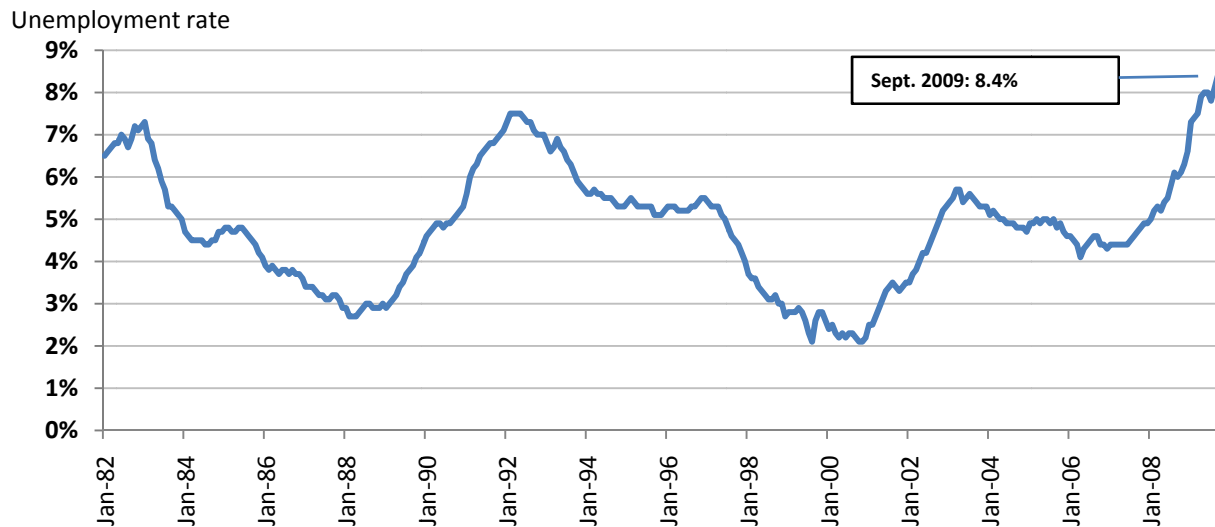
Labor Force by Educational Attainment				
	Less than high school	High school	Some college	Bachelor's or higher
<b>UNITED STATES</b>	11%	29%	29%	31%
<b>NEW ENGLAND</b>	8%	27%	25%	39%
<b>CONNECTICUT</b>	9%	28%	25%	39%

# Employment levels have plummeted in Connecticut, erasing all employment growth since 1997

## Employment in Connecticut: July 2000 to September 2009



## Connecticut's unemployment rate has reached historic highs



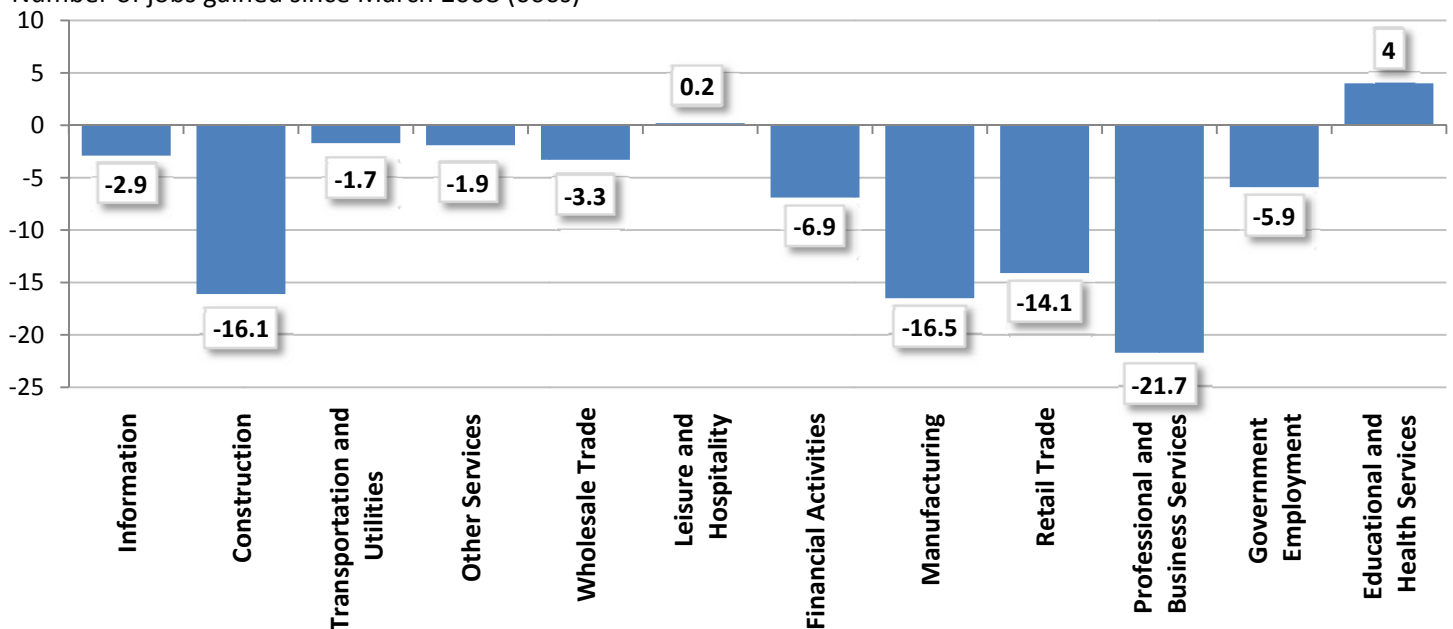
# Employment Sector Analysis

Connecticut Jobs by super-sector, Sept2009, including percent change since the beginning of the recession



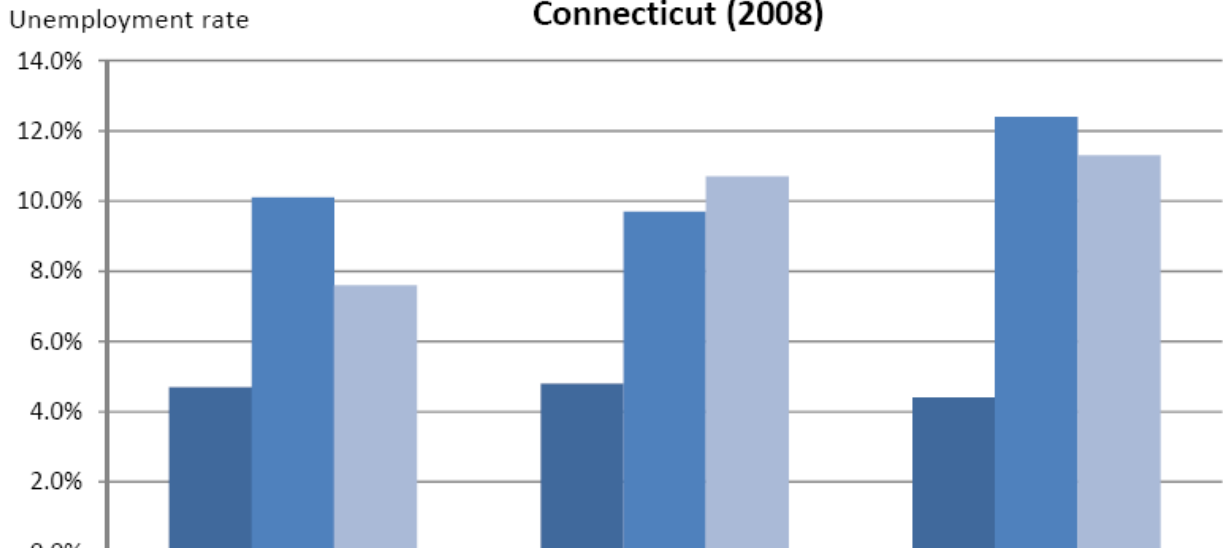
In recession, the most CT jobs have been lost in Professional and Business Services, Construction, Manufacturing, and Retail

Number of jobs gained since March 2008 (000s)



# Unemployment is higher among minorities and those with low academic achievement.

Unemployment is high among Hispanics and African Americans in Connecticut (2008)



	UNITED STATES	New England	Connecticut
■ White	4.7%	4.8%	4.4%
■ African-American	10.1%	9.7%	12.4%
■ Hispanic	7.6%	10.7%	11.3%

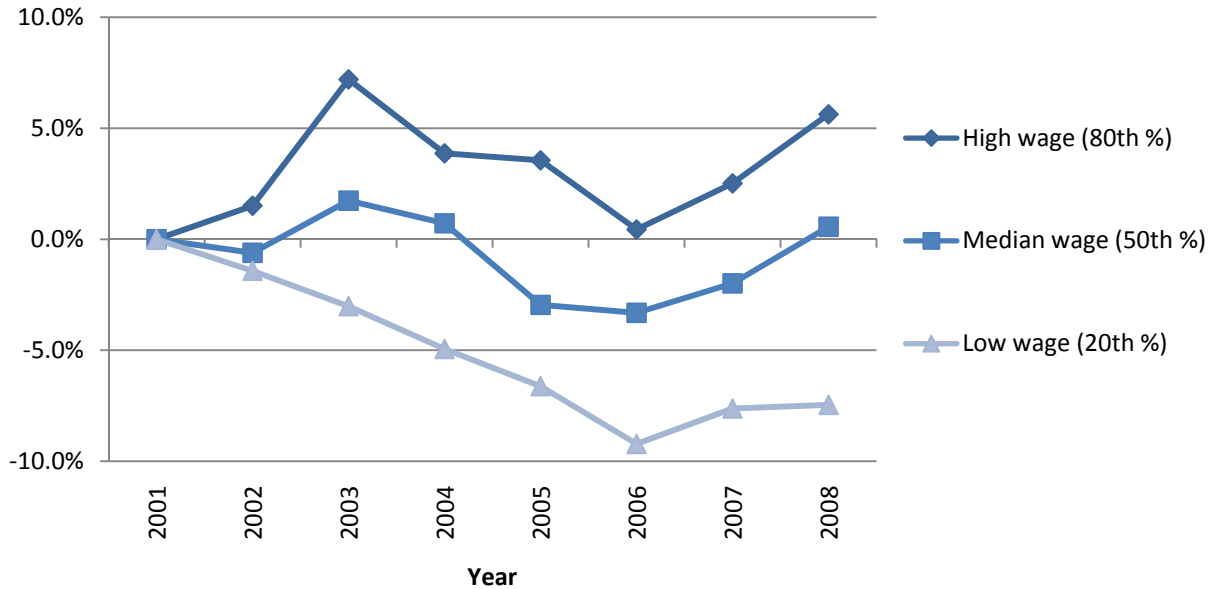
Unemployment rates are sharply higher among the less educated				
	2008 unemployment rates by education			
	Less than high school	High School	Some college	Bachelor's or higher
<b>Connecticut</b>	15.2%	6.8%	5.6%	2.9%
<b>New England</b>	13.0%	7.2%	4.8%	3.1%
<b>United States</b>	12.8%	7.0%	5.1%	2.7%
2007-2008 unemployment has risen the most among the least educated				
<b>Connecticut</b>	+4.7%	+0.5%**	+2.0%	+0.5%**
<b>New England</b>	+2.9%	+1.3%	+0.6%	+0.7%
<b>United States</b>	+2.5%	+1.5%	+1.1%	+0.5%

Unemployment rate changes represent *percentage point* increases.  
 \*\* Indicates change is not statistically significant at the 90% confidence level.

## Wages have stagnated or eroded for low- and middle-wage workers.

Change in real wages since last recession year (2001)

% Change since 2001



## Wages in CT are starkly different by various demographics...

Demographic	50th percentile (Median)
<b>All</b>	\$19.72
<b>Gender</b>	
Male	\$22.88
Female	\$17.21
<b>Race / ethnicity</b>	
White	\$21.27
African American	\$13.24
Hispanic	\$12.40
<b>Education</b>	
Less than high school	\$10.01
High school	\$15.19
Some college	\$16.71
Bachelor's or higher	\$29.56
<b>Union Status</b>	
Union	\$22.46
Non-Union	\$18.88

<b>2007 Connecticut Hourly Wages (\$ 2008)</b>		
<b>Very Low</b> wage workers (10 <sup>th</sup> percentile)	\$8.86	
<b>Low</b> wage workers (20 <sup>th</sup> percentile)	\$11.04	
<b>Median</b> wage workers (50 <sup>th</sup> percentile)	\$19.72	
<b>High</b> wage workers (80 <sup>th</sup> percentile)	\$33.59	
<b>Very high</b> wage workers (90 <sup>th</sup> percentile)	\$44.12	
<b>Region/City</b>	<b>Hourly Wage Needed by Each Adult to Achieve Self-Sufficiency</b>	
	<b>Family Type: Adult + Infant + School Age</b>	<b>Family Type: 2 Adults + 2 School Age Children</b>
Waterbury	\$24.30	\$12.88
Greater Waterbury	\$29.04	\$15.18
Danbury	\$27.96	\$14.60
Greater Danbury	\$29.36	\$15.27
Northwest Corner	\$25.53	\$13.36
Bridgeport	\$25.13	\$12.18
Stratford	\$28.13	\$14.57
Stamford	\$30.98	\$14.94
Naugatuck Valley	\$27.83	\$14.42
Upper Fairfield	\$32.54	<b>\$16.61*</b>
Lower Fairfield	<b>\$33.24*</b>	\$16.06
Hartford	\$22.36	<b>\$16.16**</b>
Hartford Suburbs	\$26.86	\$14.18
North Central	\$26.27	\$13.91
New Haven	\$23.12	\$11.36
Upper Connecticut River	\$26.08	\$13.67
Greater New Haven	\$26.79	\$14.12
Lower Connecticut River	\$26.46	\$13.86
Windham	<b>\$21.21**</b>	\$11.46
Greater Windham	\$23.13	\$12.29
New London	\$21.27	\$11.51
Greater New London	\$22.36	\$11.96

Table IV-5

Note: Highest(\*) and Lowest(\*\*) standards are bolded for each family type.  
Source: Diana Pearce, *The Real Cost of Living in 2005: The Self-Sufficiency Standard for Connecticut* (2005).